

Early English Songs  
Arranged for Viola da Gamba

by

Stephen Wentworth Arndt

Part One

# I Pass All My Hours

Pelham Humphrey 1647 - 1674



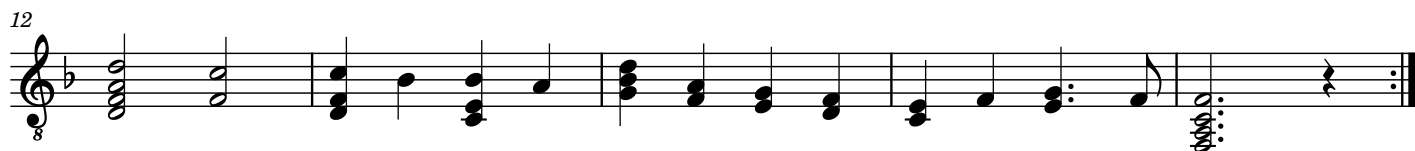
# It's Not That I Love You Less or The Self-Banished

John Blow 1648 - 1708



# Love Me Little, Love Me Long

17th Century



# Never Weather Beaten Sail

Thomas Campion 1566 - 1619

♩ = 100

8

This system of music is written on a single treble clef staff in G major (one sharp) and 4/4 time. It begins with a tempo marking of a quarter note equal to 100. The first four measures feature a series of chords: G4, G4, G4, and G4, each followed by a quarter note G4. The fifth measure contains a G4 chord and a quarter note G4. The sixth measure is a G4 chord. A repeat sign follows. The seventh measure is a G4 chord. The eighth measure contains a G4 chord and a quarter note G4. The system concludes with a double bar line.

7

8

This system of music continues on a single treble clef staff. It starts with a measure containing a G4 chord and a quarter note G4. The second measure contains a G4 chord and a quarter note G4. The third measure contains a G4 chord and a quarter note G4. A repeat sign follows. The fourth measure contains a G4 chord and a quarter note G4. The fifth measure contains a G4 chord and a quarter note G4. The sixth measure contains a G4 chord and a quarter note G4. The seventh measure contains a G4 chord and a quarter note G4. The eighth measure contains a G4 chord and a quarter note G4. The system concludes with a double bar line.

13

8

This system of music continues on a single treble clef staff. It starts with a measure containing a G4 chord and a quarter note G4. The second measure contains a G4 chord and a quarter note G4. The third measure contains a G4 chord and a quarter note G4. The fourth measure contains a G4 chord and a quarter note G4. The fifth measure contains a G4 chord and a quarter note G4. The sixth measure contains a G4 chord and a quarter note G4. The seventh measure contains a G4 chord and a quarter note G4. The eighth measure contains a G4 chord and a quarter note G4. The system concludes with a double bar line.

# Now is the Month of Maying

Thomas Morley 1557 - 1603





# The Oak and the Ash

C. 1608 (or older)



# There Was a Jolly Miller

17th-Century Tune

$\text{♩} = 180$

The first staff of music is in 6/8 time, marked with a tempo of quarter note = 180. It begins with a treble clef and a key signature of one sharp (F#). The melody starts with a quarter rest, followed by a quarter note G4, a quarter note A4, and a quarter note B4. The accompaniment consists of a bass line with a quarter note G2, a quarter note A2, and a quarter note B2, followed by a series of chords and single notes in the right hand.

6

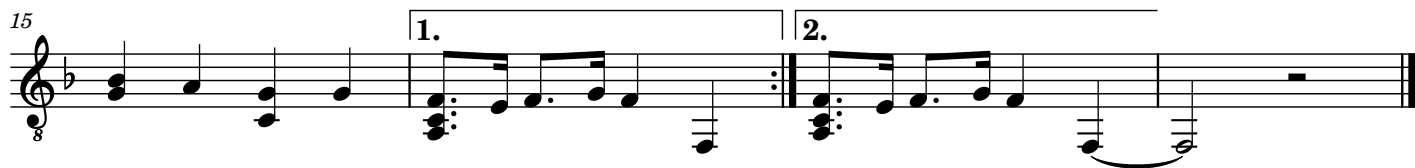
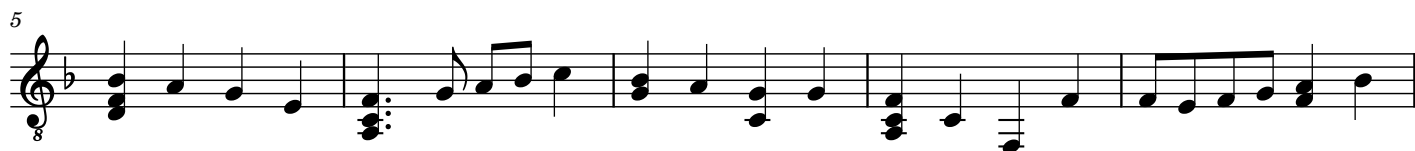
The second staff continues the melody from measure 6. It features a treble clef and a key signature of one sharp. The melody includes a quarter note G4, a quarter note A4, a quarter note B4, and a quarter note C5. The accompaniment continues with chords and single notes.

13

The third staff continues the melody from measure 13. It features a treble clef and a key signature of one sharp. The melody includes a quarter note G4, a quarter note A4, a quarter note B4, and a quarter note C5. The accompaniment continues with chords and single notes. The staff concludes with a first ending (1.) and a second ending (2.), both leading to a final cadence.

# We Be Three Poor Mariners

From *Deuteromelia*, 1609



# What Shall I Do

Henry Purcell 1658 - 1695

♩ = 110

The first staff of music is in treble clef with a 3/4 time signature. It begins with a tempo marking of a quarter note equal to 110. The key signature has one sharp (F#). The melody starts on a G4, moves to A4, B4, and then descends through G4, F#4, E4, D4, C4, B3, and A3. The accompaniment consists of chords in the left hand, including a G4 chord, a G4-F#4 chord, and a G4-F#4-E4 chord.

9

The second staff continues the melody from the first. It starts with a G4, moves to A4, B4, and then descends through G4, F#4, E4, D4, C4, B3, and A3. The accompaniment consists of chords in the left hand, including a G4 chord, a G4-F#4 chord, and a G4-F#4-E4 chord.

18

The third staff continues the melody from the second. It starts with a G4, moves to A4, B4, and then descends through G4, F#4, E4, D4, C4, B3, and A3. The accompaniment consists of chords in the left hand, including a G4 chord, a G4-F#4 chord, and a G4-F#4-E4 chord.

27

The fourth staff continues the melody from the third. It starts with a G4, moves to A4, B4, and then descends through G4, F#4, E4, D4, C4, B3, and A3. The accompaniment consists of chords in the left hand, including a G4 chord, a G4-F#4 chord, and a G4-F#4-E4 chord.